



Scientific Research Project  
Biomechanical Analyses  
at the  
IAAF World Championships Daegu 2011

Javelin Throw Women - Final

(September 2, 2011)

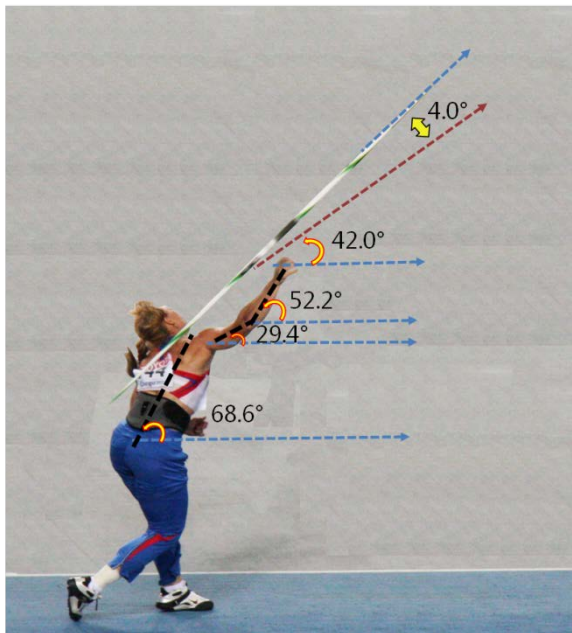


Korean Society of Sport Biomechanics

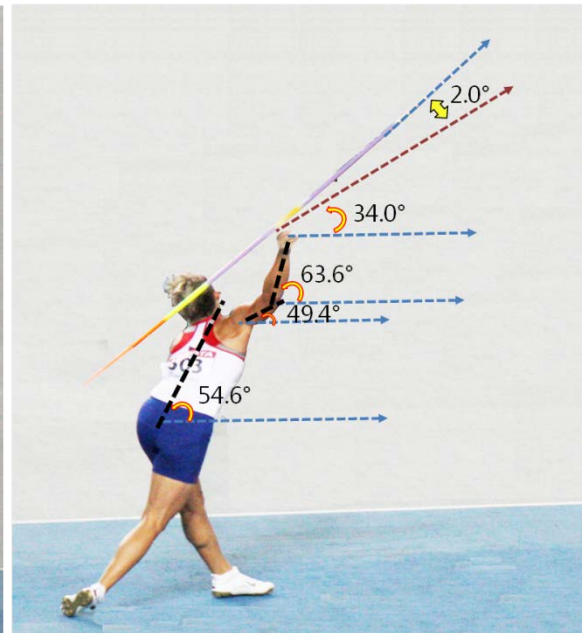
## Biomechanical Analysis of Javelin Throw Women - Final

athlete	Analyzed attempt	Result	Release velocity	Release height	Angle at release (deg)			Inclination angle (deg)			Distance (m)			Duration (ms)		
					Attitude	Release	Attack	Trunk	Upperarm	Forearm	Impulse stride	Delivery stride	Foul line	Impulse stride	Delivery stride	Release
Maria ABAKUMOVA (RUS)	5	71.99	25.1	1.65	46.0	42.0	4.0	68.6	29.4	52.2	1.84	1.39	1.87	270	240	120
Barbora SPOTAKOVA (CZE)	5	71.58	22.9	1.87	32.0	34.0	2.0	54.6	49.4	63.6	1.49	1.48	3.59	300	186	147
Sunette VILJOEN (RSA)	5	68.38	24.4	1.71	44.0	32.0	12.0	51.4	51.9	78.5	1.59	1.41	0.95	327	166	84
Mean		70.65	24.1	1.70	40.7	36.0	6.0	58.2	43.6	64.8	1.60	1.40	2.10	299	197	117

Maria ABAKUMOVA (RUS) 1<sup>st</sup> 71.99 m



Barbora SPOTAKOVA (CZE) 2<sup>nd</sup> 71.58 m



Sunette VILJOEN (RSA) 3<sup>rd</sup> 68.38 m

