



Scientific Research Project
Biomechanical Analyses
at the
IAAF World Championships Daegu 2011

Daily Report

(September 1, 2011)

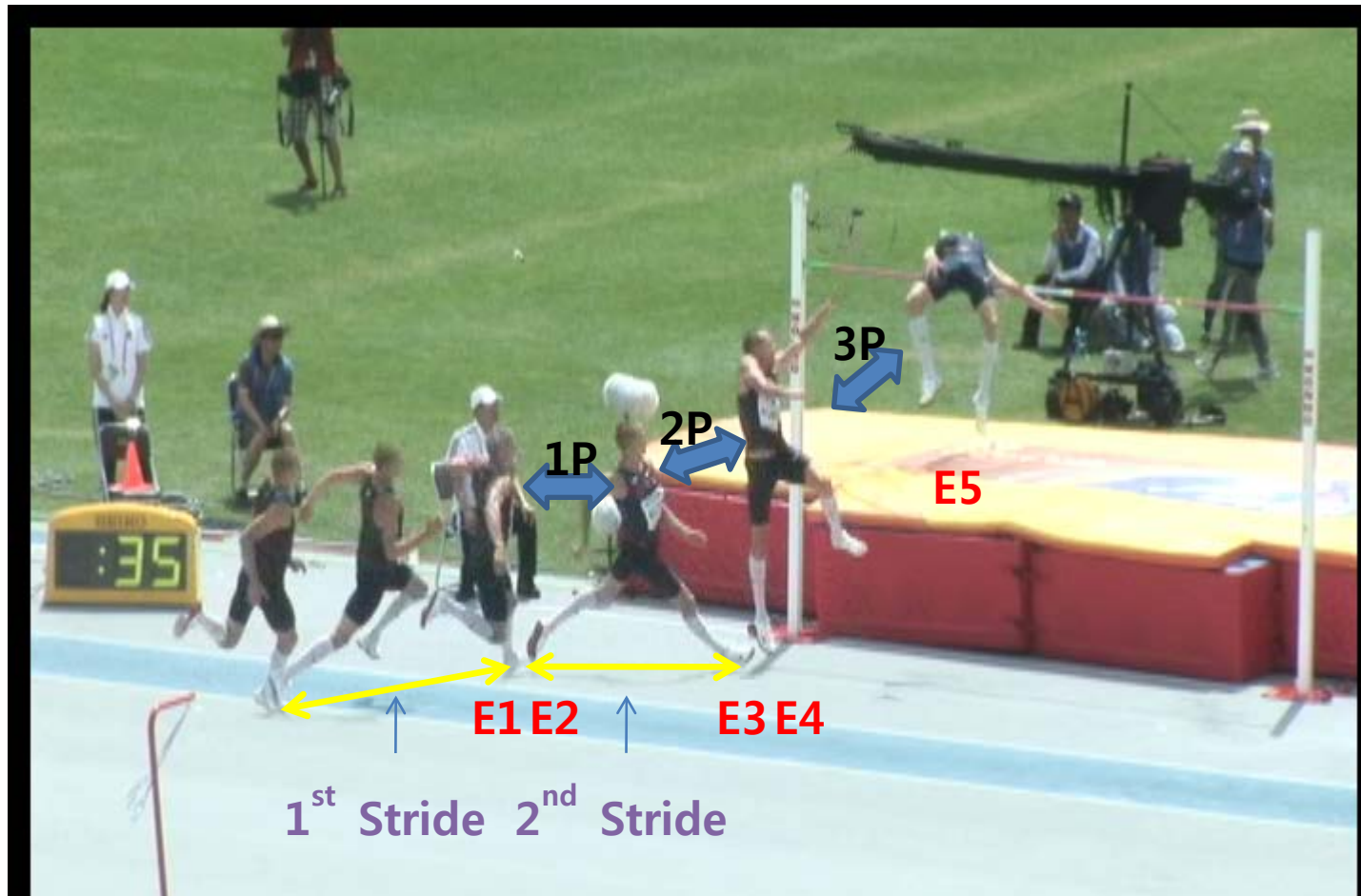


Korean Society of Sport Biomechanics

Biomechanical Analysis of the High Jump Men – Qualification (Group A)

VARIABLE(unit)		Jesse Williams(USA)	Donald Thomas(BAH)	Dakvin Edwards(LCA)	Ye-Hwan Yun(KOR)
RESULT(m)		2.31	2.31	2.31	2.16
Time (sec.)	1Phase	0.15	0.20	0.16	0.12
	2Phase	0.17	0.17	0.19	0.14
	3phase	0.42	0.43	0.40	0.39
	1P : 2P(%)	47.3 : 52.7	53.5 : 46.5	46.1 : 53.9	46.6 : 53.4
Angle (degree)	Maximum flexion of Knee joint	137.2	145.3	136.2	150.3
	Knee joint at 2 nd touch(E3)	169.4	164.1	164.5	164.9
Relative Stride* (%)	1 st stride	51.7	49.3	46.0	49.6
	2 nd stride	48.3	50.7	54.0	50.4

*The ratio of stride length to result



Events & Phases



Stromotion(Jesse Williams,USA)

IAAF World Championships Daegu 2011